

## ORIGINAL TOOLS

## Shimano Service Parts

### Lock Ring Tool **TL-LR10**

For Disc Rotor SM-RT96/RT77  
& HG Sprockets  
(Mounts to ratcheting  
socket wrench handle.)



Code No.  
Y-120 09220

### Lock Ring Tool **TL-LR15**

For Disc Rotor SM-RT96/RT77  
& HG Sprockets



Code No.  
Y-120 09230

### Lock Ring Tool **TL-LR20**

For SAINT Disc Rotor SM-RT80/80S



Code No.  
Y-25U 15000

### Lock Ring Tool **TL-HG09**

For CAPREO CS-HG70-S



Code No.  
Y-IZ7 02000

### Crank Adaptor Installation Tool **TL-FC32**

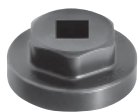
For FC-M960/FC-M760/FC-M800/FC-7800



Code No.  
Y-130 09210

### Crank Adaptor Installation Tool for Impact Wrench **TL-FC33**

For FC-M800/FC-M760



Code No.  
Y-130 09230

### Head Parts Spanner Set **TL-FC31**



Code No.  
Y-130 98100

### Crank Installation Tool **TL-FC16**

For FC-M960/FC-M760/FC-M800/FC-7800



Code No.  
Y-130 09220

### Cotterless Crank Extractor **TL-FC10**



Code No.  
Y-130 09010

### Special Plug Tool **TL-FC15**

For FC-5502/FC-5505/FC-M572



Code No.  
Y-130 09180

### Peg Spanner **TL-FC20**



Code No.  
Y-130 09130

Cone Adjusting Tool Set  
**TL-PD63**

For SPD Pedal

**TL-PD33**

See page176



**TL-PD63**  
Code No.  
Y-460 98630

**TL-PD33**  
Code No.  
Y-41N 98040

Cone Adjusting Tool  
**TL-PD77**

For PD-7700/7750/7800



Code No.  
Y-400 01100

Cone Adjusting Tool  
**TL-PD40**

For loosening/tightening  
lock nut



Code No.  
Y-42A 09000

Bottom Bracket Installation Tool  
(Mounts to ratcheting socket  
wrench handle.)

**TL-UN66**



Code No.  
Y-130 09075

Bottom Bracket Installation Tool  
**TL-UN74-S**



Code No.  
Y-130 09073

Right hand cone Removal Tool  
**TL-8S10**

For Inter-8 Geared Hubs



Code No.  
Y-708 00100

Right-hand cone Installation Tool  
**TL-8S20**

For Inter-8 Geared Hubs



Code No.  
Y-708 00200

Carrier unit gear Alignment Tool  
**TL-8S30**

For Inter-8 Geared Hubs



Code No.  
Y-708 00300

Chainwheel Installation Tool  
**TL-UN75**

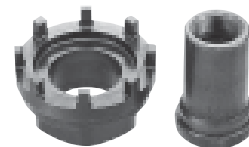
FC-M750, M739, M570,  
M569, MC40 chainwheel  
installation tool for use  
with TL-UN96



Code No.  
Y-130 09068

Chainwheel / Bottom Bracket  
**TL-UN96**

FC-M952, M951, M950, / BB-M950  
FC-M750, M739, M570,  
M569, MC40



Code No.  
Y-130 98090

Sprocket Holding Tool  
(Holds sprockets when removing lock  
rings.)

**TL-SR21**(for 3/22")

**TL-SR22**(for 1/8")

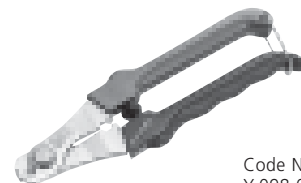


**TL-SR21:**  
Code No.  
Y-121 89000

**TL-SR22:**  
Code No.  
Y-121 89010

Cable Cutter  
**TL-CT10**

Use to cut outer casings,  
cables and pinch end caps.

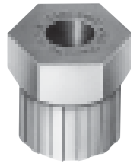


Code No.  
Y-098 00010

## ORIGINAL TOOLS

## Shimano Service Parts

Multiple Freewheel Removal Tool  
**TL-FW30**



Code No.  
Y-120 09050

Ball Bearing Unit Installation Tool  
**TL-HA20**

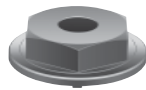
For SAINT



Code No.  
Y-25U 14000

Single Freewheel Removal Tool  
**TL-FW40**

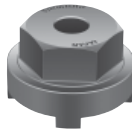
2 Keys



Code No.  
Y-120 09040

Single Freewheel Removal Tool  
**TL-FW45**

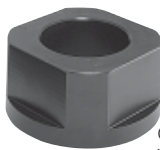
4 Keys for BMX



Code No.  
Y-120 09150

R/H Adapter Open and Close Tool  
**TL-FH81**

For FH-C810/C811



Code No.  
Y-20W 00110

HG/IG/UG Chain Connecting Tools  
**TL-CN27**

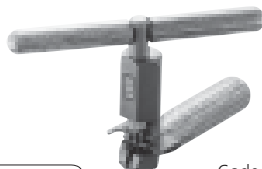
Spare Arrow  
Y-130 98190



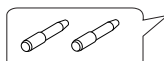
Code No.  
Y-130 98180

HG/IG/UG Chain Connecting Tools  
**TL-CN32**

2 spare pins included in grip.

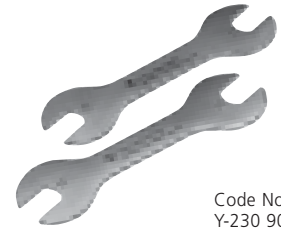


Code No.  
Y-130 98150



Hub Cone Wrenches  
**TL-HS10**

13/14mm, 2 wrenches



Code No.  
Y-230 90010

Hub Cone Wrenches  
**TL-HS20**

15/17mm



Code No.  
Y-320 90010

Hub Spanner

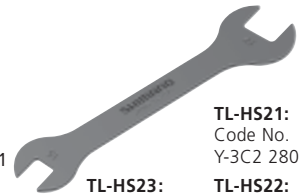
**TL-HS21** 23mm x 15mm

**TL-HS22** 24mm x 17mm

For HB-M800

**TL-HS23** 28mm x 18mm

For HB-M976/M970/M975/M776/M801  
and WH-M975/M776



**TL-HS21:**  
Code No.  
Y-3C2 28000

**TL-HS23:**  
Code No.  
Y-20W 04000

**TL-HS22:**  
Code No.  
Y-3C2 27000

**TL-HB80**

For HB-M800/M800A spoke lacing



Code No.  
Y-25U 17000

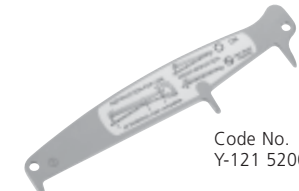
Hub Cone Wrenches  
**TL-3R10**

14 mm  
2 wrenches



Code No.  
Y-320 99010

Chain Wear Indicator  
**TL-CN41**



Code No.  
Y-121 52000

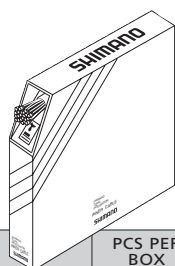
Hub Dynamo Tool  
**TL-DH10**

For Hub Dynamo 32/36mm



Code No.  
Y-120 09000

**Inner Cable File Box**



Code No.	Description	PCS PER BOX
Y-600 98510	For Shifting Lever $\phi 1.2\text{mm} \times 2000\text{mm}$ (Stainless steel)	100
Y-600 98520	For Shifting Lever $\phi 1.2\text{mm} \times 2100\text{mm}$	100
Y-600 98530	For Shifting Lever $\phi 1.1\text{mm} \times 2100\text{mm}$ (Stainless steel)	100
Y-800 98550	For ATB Brake Lever $\phi 1.6\text{mm} \times 1700\text{mm}$ (Stainless steel)	100
Y-800 98520	For ATB Brake Lever $\phi 1.6\text{mm} \times 1700\text{mm}$	100
Y-800 98560	For Racing Brake Lever $\phi 1.6\text{mm} \times 1700\text{mm}$ (Stainless steel)	100
Y-800 98530	For Racing Brake Lever $\phi 1.6\text{mm} \times 1700\text{mm}$	100

**DURA-ACE Die-Extruded Shifting Cable**



Code No.	Description
Y-600 98900	$\phi 1.2\text{mm} \times 2000\text{mm}$ (Stainless steel/1-pack)
Y-600 30014	$\phi 1.2\text{mm} \times 3000\text{mm}$ (Stainless steel/1-pack)

**XTR Die-Extruded & Coated Inner Cable**

for Shift Levers



Code No.	Description
Y-600 98600	$\phi 1.2\text{mm} \times 2100\text{mm}$ (Stainless steel/1-pack)

**Shift Inner Cables w/inner end cap**



Code No.	Description
Y-600 98100	$\phi 1.2\text{mm} \times 2100\text{mm}$ (tin plated/10 pack)

**DURA-ACE Brake Cable**



Code No.	Description
Y-800 98300	$\phi 1.6\text{mm} \times 1700\text{mm}$ (Stainless steel/1-pack)

**XTR Brake Cable**



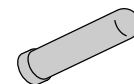
Code No.	Description
Y-800 98200	$\phi 1.6\text{mm} \times 1700\text{mm}$ (Stainless steel/1-pack)

**Brake Cable Double-End**



Code No.	Description
Y-800 98400	$\phi 1.6\text{mm} \times 1700\text{mm}$ (10-pack)

**Inner Cable Cap**



Code No.	Description	QTY.
Y-620 98030	Inner Cable Cap ( $\phi 1.2\text{mm}$ )	100
Y-620 98040	Inner Cable Cap ( $\phi 1.6\text{mm}$ )	100
Y-620 98060	Inner Cable Cap ( $\phi 1.2\text{mm}$ )	10
Y-620 98070	Inner Cable Cap ( $\phi 1.6\text{mm}$ )	10

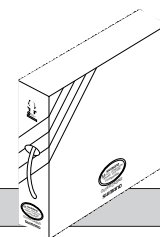
**Sealed Cap with Tongue & Rubber Shield**



Code No.	Description	QTY.
Y-6AM 98080	Sealed Cap with Tongue & Rubber Shield	4 pieces

**M SYSTEM Brake Outer Casing File Box ( $\phi 5\text{mm} \times 30\text{m}/98.5\text{ft.}$ )**

Use for 1.6mm diameter brake inner cables.



Code No.	Description
Y-80Y 00210	$\phi 5\text{mm} \times 30\text{m}/\text{Red}$ (#107)
Y-80Y 00220	$\phi 5\text{mm} \times 30\text{m}/\text{Blue}$ (#207)
Y-80Y 00240	$\phi 5\text{mm} \times 30\text{m}/\text{Yellow}$ (#407)
Y-80Y 00250	$\phi 5\text{mm} \times 30\text{m}/\text{White}$ (#507)
Y-80Y 00251	$\phi 5\text{mm} \times 30\text{m}/\text{Transparent Silver}$ (#517)
Y-80Y 00260	$\phi 5\text{mm} \times 30\text{m}/\text{Black}$ (#607)
Y-80Y 00263	$\phi 5\text{mm} \times 30\text{m}/\text{High-Tech Gray}$ (#637)
Y-80Y 00264	$\phi 5\text{mm} \times 30\text{m}/\text{Gray}$ (#647)

**SIS-SP41 Greased Outer Casing**  
(ø4mm x 10m/32.8ft.)

For ø1.2mm inner cable



Code No.	Color
Y-6Y1 98010	Black (#607)
Y-6Y1 98020	High Tech Gray (#637)

**SIS-SP41 Greased Outer Casing**  
(ø4mm x 50m/164.0ft.)

For ø1.2mm inner cable



Code No.	Color
Y-600 98580	Black (#607)
Y-600 98590	High Tech Gray (#637)

**SIS-SP51 Greased Outer Casing Box**  
(ø4mm x 30m/98.4ft.)

For ø1.2mm inner cable

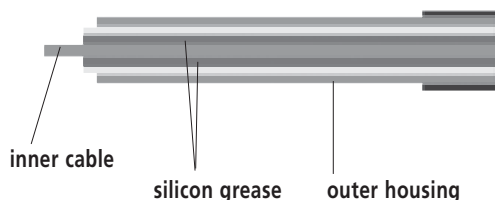


Code No.	Color
Y-600 98552	Black (#607)

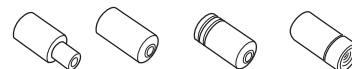
**SIS-SP40**



**SIS-SP41**



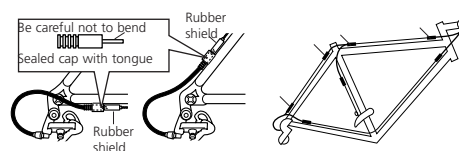
**Outer Casing Cap**



Code No.	Description	Material	QTY.
Y-872 98100	Outer Cap For BR-M950, BR-M739/Silver	Aluminum	1
Y-872 98110	Outer Cap For BR-M950, BR-M739/Black	Aluminum	1
Y-60E 00010	Sealed Outer Cap (ø6mm)	Steel	1
Y-60B 98010	Outer Caps (ø6mm)	Steel	100
Y-6Z2 90030	SIS-SP40 Sealed Outer Cap (ø4mm)	Aluminum	1
Y-6Z2 98010	SIS-SP40 Sealed Outer Caps (ø6mm)	Plastic	100
Y-6ZA 98010	SIS-SP40 Outer Caps (ø6mm)	Plastic	100
Y-6Z1 90010	SIS-SP40 Sealed Outer Cap ALUMINUM (ø6mm)	Aluminum	1

**Note;**  
regarding the sealed cap with tongue and rubber shield

The sealed cap with tongue and the rubber shield should be installed to the outer casing stopper of the frame.



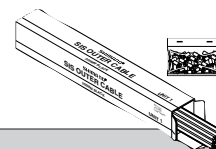
**SIS-SP Shift Outer Casing**  
(ø5mm x 7.62m/25ft.)

w/Outer Cap  
(ø6mm:30pcs. / ø5.5mm:15pcs. / ø4mm:15pcs.)



Code No.	Color
Y-60B 97602	Silver (#537)
Y-60B 97612	White (#507)
Y-60B 97622	Red (#107)
Y-60B 97632	Blue (#207)
Y-60B 97652	Black (#607)
Y-60B 97682	Yellow (#407)
Y-60B 97692	High Tech Gray (#637)

**SIS40 Shift Greased Outer Casing (ø4mm)**



Code No.	Description
Y-600 98700	Black/600mm(50pcs)/w/Outer Cap(50pcs)
Y-600 98800	Black/300mm(50pcs)/w/Outer Cap(50pcs)

**Cable Liner (1800mm)**

Code No.	Description
Y-800 98100	For Shifter/Brake(10-pack)



**Shift Cable Set**



**(DURA-ACE)**

Code No. Y-600 98080

- Outer Casing:  $\phi$ 4mm x 600mm (2pcs.)  
 $\phi$ 4mm x 320mm (1pc.)
- Inner Cable:  $\phi$ 1.2mm x 2000mm (2 pcs./Stainless steel)
- With Outer Cap / Inner End Cap

**(NEW XTR)**

Code No. Y-600 98060

- SIS-SP41 Black Outer Casing:  $\phi$ 4mm x 600mm (2pcs.)  
 $\phi$ 4mm x 340mm (1pc.)  
 $\phi$ 4mm x 300mm (2pcs.)
- Inner Cable:  $\phi$ 1.2 mm x 2100 mm (2pcs./Stainless steel/Coated Inner Cable)
- With Sealed Outer Cap & Rubber Shield / Inner End Cap

**(XTR)**

Code No. Y-600 98090

- Gray Outer Casing:  $\phi$ 4mm x 600mm (2pcs.)  
 $\phi$ 4mm x 340mm (1pc.)  
 $\phi$ 4mm x 300mm (2pcs.)
- Inner Cable:  $\phi$ 1.2 mm x 2100 mm (2pcs./Stainless steel/Coated Inner Cable)
- With Sealed Outer Cap & Rubber Shield / Inner End Cap

**(DEORE)**

Code No. Y-600 98610

- Outer Casing:  $\phi$ 4mm x 600mm (2pcs.)  
 $\phi$ 4mm x 340mm (1pc.)  
 $\phi$ 4mm x 300mm (2pcs.)
- Inner Cable:  $\phi$ 1.2mm x 2100mm (2pcs./Stainless steel)
- With Sealed Outer Cap & Rubber Shield / Inner End Cap

**(SIS40)**

Code No. Y-600 98500

- Outer Casing:  $\phi$ 4mm x 600mm (2pcs.)  
 $\phi$ 4mm x 340mm (1pc.)
- Inner Cable:  $\phi$ 1.2mm x 2100 mm (2pcs.)
- With Outer Cap / Inner End Cap

**Brake Cable Set**



**(DURA-ACE)**

Code No. Y-800 98070

- Outer Casing:  $\phi$ 5mm x 800mm (1pc.)  
 $\phi$ 5mm x 1400mm (1pc.)
- Inner Cable:  $\phi$ 1.6mm x 1000mm (1pc./Stainless steel)  
 $\phi$ 1.6mm x 1700mm (1pc./Stainless steel)
- With Sealed Outer Cap / Inner End Cap

**(XTR)**

Code No. Y-800 98090

- Black Outer Casing:  $\phi$ 5mm x 800mm (1pc.)  
 $\phi$ 5mm x 1400mm (1pc.)
- Inner Cable:  $\phi$ 1.6mm x 1000mm (1pc./Stainless steel)  
 $\phi$ 1.6mm x 1700mm (1pc./Stainless steel)
- With Boot / Sealed Outer Cap / Inner End Cap

**(XTR)**

Code No. Y-800 98060

- Gray Outer Casing:  $\phi$ 5mm x 800mm (1pc.)  
 $\phi$ 5mm x 1400mm (1pc.)
- Inner Cable:  $\phi$ 1.6mm x 1000mm (1pc./Stainless steel)  
 $\phi$ 1.6mm x 1700mm (1pc./Stainless steel)
- With Boot / Sealed Outer Cap / Inner End Cap

**(Standard)**

Code No. Y-800 98080

- Outer Casing:  $\phi$ 5mm x 800mm (1pc.)  
 $\phi$ 5mm x 1400mm (1pc.)
- Inner Cable:  $\phi$ 1.6mm x 1000mm (1pc.)  
 $\phi$ 1.6mm x 1700mm (1pc.)
- With Outer Cap / Inner End Cap

**Disc Hose Kit**

Code No. Y-8H4 98020

**(Compatible with all Shimano Disc brakes)**

- Brake Hose: 1780mm (1pc.)
- O-rings: (4pcs.)
- Connector Insert: (2pcs.)
- Olives: (2pcs.)

**Disc Brake Banjo Bolt & O-ring**

Code No. Y-8H1 98010

Always use Shimano brake pads to assure top performance for your Shimano brake system.

## Brake Shoes for Road

①  Fits: BR-7800	②  Fits: BR-7700	③  Fits: BR-6600	④  Fits: BR-6500	⑩  R55C2 R55C R55C+1 R55C for Carbon Rim R55C for Ceramic Rim Fits: BR-7800 BR-7700 BR-6600 BR-6500 BR-5600 BR-5501 BR-5500 BR-R600 BR-R650
⑤  Fits: BR-5600 BR-R650	⑥  Fits: BR-5501 BR-5500	⑦  Fits: BR-R600	⑧  Fits: BR-4500 BR-3400 BR-R450	
⑪  Fits: BR-6403 BR-1055 BR-A550	⑫  Fits: BR-1055 BR-A550 BR-4400 BR-3300	⑬  SHIMANO M5 SYSTEM COMPATIBLE Fits: BR-1055 BR-A550 BR-A416 BR-A410 BR-4400 BR-3300	⑭  Fits: BR-A500 BR-A450 BR-A350 BR-A250	
⑮  For V-BRAKE Brake Fits: BR-F700	⑯  For V-BRAKE Brake Fits: BR-F700	⑰  S70C (Severe Condition) M70R2 (Severe Condition) M70CT4 (Severe Condition) For Cantilever Brake Fits: BR-R550	⑱  S70C (Severe Condition) M70R2 (Severe Condition) M70CT4 (Severe Condition) For Cantilever Brake Fits: BR-R550	

### Brake shoe characteristics

	Cartridge shoe	M SYSTEM	Length	Brake shoe characteristics
R55C2	○	—	55 mm	Performs well in dry conditions and tends to be low noise. Highly resistant to wear in rainy conditions.
R55C +1	○	—	55 mm	* 1 mm thicker shoe with R55C
R55C	○	—	55 mm	Performs well in dry conditions and tends to be low noise. Wear in rainy conditions.
R55C for Carbon rim	○	—	55 mm	For Carbon rim
R55C for Ceramic rim	○	○	55 mm	For Ceramic rim only
M50T	—	○	50 mm	Performs well in wet conditions. But faster rim wear.
R50T	—	—	50 mm	Performs well in dry conditions and tends to be low noise. Wears in rainy conditions.
R50T2	—	—	50 mm	Performs well in dry conditions and tends to be low noise. Wears in rainy conditions. Toe-in adjust design.

	Code No.	Description
1	Y-8A0 98010	R55C2 (BR-7800) Cartridge-Type Brake Shoe Set (Pair)
2	Y-8FA 98010	R55C+1 (BR-7700) Cartridge-Type Brake Shoe Set (+1 mm / Pair)
3	Y-8DD 98090	R55C2 (BR-6600) Cartridge-Type Brake Shoe Set (Pair)
4	Y-83H 98010	R55C (BR-6500) Cartridge-Type Brake Shoe Set (Pair)
5	Y-8DU 98070	R55C2 (BR-5600) Cartridge-Type Brake Shoe Set (Pair)
	Y-8F6 98010	R55C2 (BR-R650) Cartridge-Type Brake Shoe Set (Pair)
6	Y-83J 98070	R55C (BR-5501/5500) Cartridge-Type Brake Shoe Set (Pair)
7	Y-8C7 98030	R55C+1 (BR-R600) Cartridge-Type Brake Shoe Set (+1 mm / Pair)
8	Y-8E6 98010	R50TS (BR-4500 / 3400 / R450) Brake Shoe Set (5 Pairs)
9	Y-8EL 98010	R55C2 (BR-R560) Cartridge-Type Brake Shoe Set (Pair)
10	Y-8A0 98020	R55C2 (BR-7800 / R650) Brake Shoes & Fixing Bolts (Pair)
	Y-8FA 98020	R55C (BR-7700) Brake Shoes & Fixing Bolts (Pair)
	Y-8FA 98130	R55C+1 (BR-7700) Brake Shoes (+1 mm) & Fixing Bolts (Pair)
	Y-8FA 98140	R55C (BR-7700/6500 / R650) Brake Shoes & Fixing Bolts (Pair) for Carbon Rim
	Y-8FA 98150	R55C (BR-7700/6500 / R650) Brake Shoes & Fixing Bolts (Pair) for Ceramic Rim
11	Y-83G 98010	BR-6403 Brake Shoe Set (5 pairs)
12	Y-82A 99010	R50T (BR-1050) Brake Shoe Set (5 pairs)
13	Y-8BC 98100	M50T Brake Shoe Set (10 pairs)
14	Y-81G 98100	BR-A250 Brake Shoe Set (10 pairs)
15	Y-8CU 98010	R55C (BR-F700) Cartridge-Type Brake Shoe Set (Pair)
16	Y-8CU 98020	R55C (BR-F700) Brake Shoes & Fixing Bolts (Pair)
17	Y-8A2 98020	S70C (Severe Condition) Cartridge-Type Brake Shoe Set (Pair)
	Y-8A2 98040	M70R2 (Severe Condition) Cartridge-Type Brake Shoe Set (Pair)
	Y-8A2 98050	M70CT4 (Severe Condition) Cartridge-Type Brake Shoe Set (Pair)
	Y-8A2 98030	S70C (Severe Condition) Brake Shoes & Fixing Bolts (Pair)
18	Y-8AA 98200	M70R2 (Severe Condition) Brake Shoes & Fixing Bolts (Pair)
	Y-8A2 98060	M70CT4 (Severe Condition) Brake Shoes & Fixing Bolts (Pair)



Y-8A0 98010

Cartridge-Type Brake Shoes for ATB

**1** M70R2  
For V-BRAKE Brake  
Fits: BR-M970 BR-M960 BR-M951 BR-M950 BR-M770 BR-M739 BR-M510

**2** M70R2  
For V-BRAKE Brake  
Fits: BR-M960 BR-M951 BR-M950 BR-M739 BR-M510

**3** For Ceramic Rim  
For V-BRAKE Brake  
Fits: BR-M960 BR-M951 BR-M950 BR-M739

**4** M70R2  
For V-BRAKE Brake  
Fits: BR-M760 BR-M750 BR-M739

**8** M70R2 (Severe Condition)  
For V-BRAKE Brake  
For Ceramic Rim  
Fits: BR-M960 BR-M951 BR-M950 BR-M770 BR-M760 BR-M750 BR-M739 BR-M510 BR-M431 BR-M430

**5** S70C  
For V-BRAKE Brake  
Fits: BR-M760 BR-M580

**6** S70C  
For V-BRAKE Brake  
Fits: BR-M770 BR-M750 BR-M739 BR-M510

**7** M70R2 S70C  
For V-BRAKE Brake  
Fits: BR-M431 BR-M430

**9** S70C  
For V-BRAKE Brake  
Fits: BR-M960 BR-M770 BR-M760 BR-M750 BR-M739 BR-M580 BR-M510 BR-M431 BR-M430

**10** M70R  
Fits: BR-M900-C BR-M900 BR-M737 BR-M565-E

**11** M70R for Ceramic Rim  
Fits: BR-M900-C BR-M900 BR-M737 BR-M565-E

**12** M70R  
M70R for Ceramic Rim  
Fits: BR-M900-C BR-M900 BR-M737 BR-M565-E

**13** M65T  
Fits: BR-M565 BR-M565-E BR-MC33 BR-MC33-E

**14** M65T  
Fits: BR-M565 BR-M565-E BR-MC33 BR-MC33-E

■ Brake shoe characteristics

	Cartridge shoe	M SYSTEM	Length	Threaded shoe post	Brake shoe characteristics
M70R2	○	○	70 mm	○	A race shoe that performs well in dry and wet conditions, and is also highly resistant to wear may give off noise.
M70R2 (Severe Condition)	○	○	70 mm	○	Shoe thickness is 1 mm thicker than M70R2.
Ceramic	○	—	70 mm	○	Specific shoe for ceramic rims.
M70CT4 (Severe Condition)	○	○	70 mm	○	Cartridge shoe with M70T4
S70C	○	—	70 mm	○	Performs well in dry conditions and tends to be low noise. Wears in muddy conditions.
M70R	○	○	70 mm	—	A race shoe that performs well in dry and wet conditions.
M65T	○	○	60 mm	—	Performs especially well in wet conditions and may pass DIN standards. Faster rim wear and tends to fade.

	Code No.	Description
1	Y-8E4 98010	M70R2 (BR-M970) Brake Shoe Set (Pair)
	Y-8EM 9802A	M70R2 (BR-M770) Brake Shoe Set (Pair)
	Y-8EM 9803A	M70CT4 (BR-M770) Brake Shoe Set (Pair)
2	Y-8CL 9803A	M70R2 (BR-M960) Brake Shoe Set (Pair)
	Y-8AB 98010	M70R2 (BR-M950) Brake Shoe Set (Pair)
3	Y-8CL 9804A	BR-M960 Brake Shoe Set (Pair) for Ceramic Rim
	Y-8AA 98030	BR-M950 Brake Shoe Set (Pair) for Ceramic Rim
4	Y-8AA 98100	BR-M739 Brake Shoe Set (Pair) for Ceramic Rim
	Y-8BW 9801A	M70R2 (BR-M750) Brake Shoe Set (Pair)
5	Y-8CX 9801A	S70C (BR-M760) Brake Shoe Set (Pair)
	Y-8DA 98010	S70C (BR-M580) Brake Shoe Set (Pair)
6	Y-8EM 9801A	S70C (BR-M770) Brake Shoe Set (Pair)
	Y-8GV 98020	S70C (BR-M750) Brake Shoe Set (Pair)
7	Y-8C8 98030	M70R2 (BR-M430) Brake Shoe Set (Pair)
	Y-8C8 98020	S70C (BR-M430) Brake Shoe Set (Pair)


	Code No.	Description
8	Y-8AA 98020	M70R2 (BR-M950/M770/M739) Brake Shoes & Fixing Pins (Pair)
	Y-8AA 98200	M70R2 (Severe Condition) Brake Shoes & Fixing Pins (Pair)
	Y-8AA 98200	BR-M950/M739 Brake Shoes & Fixing Pins (Pair) for Ceramic Rim
	Y-8A2 98060	M70CT4 (BR-M770) Brake Shoes & Fixing Pins (Pair)
9	Y-8AA 98130	S70C (BR-M770/M750) Brake Shoes & Fixing Pins (Pair)
10	Y-83X 98010	M70R (BR-M737) Brake Shoe Set (4 pcs.)
11	Y-8BG 98100	M70R Brake Shoe Set (4 pcs.) for Ceramic Rim
12	Y-83X 98020	M70R Brake Shoes & Fixing Screws (2 pairs)
	Y-83X 98070	M70R Brake Shoes & Fixing Screws (2 pairs) for Ceramic Rim
13	Y-8BA 98010	M65T Brake Shoe Set (4 pcs.)
14	Y-8BA 98020	M65T Brake Shoes & Fixing Screws (2 pairs)



## Brake Shoes for ATB

**1**

M70T3  
M70T4




SHIMANO M-SYSTEM COMPATIBLE

**For V-BRAKE Brake**

**Fits:** BR-M760 BR-M750 BR-M739  
BR-M580 BR-M600 BR-M600-MX  
BR-M570 BR-M530 BR-M510  
BR-MC18 BR-M330 BR-M420  
BR-T300 BR-MX70

**2**

S70T




**For V-BRAKE Brake**

**Fits:** BR-M570 BR-M600 BR-M530  
BR-M510 BR-MC18 BR-T300

**3**

M70W




SHIMANO M-SYSTEM COMPATIBLE

**For V-BRAKE Brake**

**Fits:** BR-C900 BR-C600 BR-M951  
BR-M750 BR-M739 BR-M600-MX  
BR-M600 BR-M570 BR-M510  
BR-MC18 BR-M330 BR-M420  
BR-T300

**4**

M70T2



SHIMANO M-SYSTEM COMPATIBLE

**Fits:** BR-MC16  
BR-T400 BR-MC40 BR-M280

**5**

S65T




**For V-BRAKE Brake**

**Fits:** BR-M330 BR-M421 BR-M420

**6**


M55T



SHIMANO M-SYSTEM COMPATIBLE

**Fits:** BR-M290 BR-M290-E BR-CT91  
BR-CT90 BR-CT90-E BR-CT50  
BR-CT51 BR-CT20 BR-CT21  
BR-TY22 BR-TY23 BR-TY20  
BR-TY21 BR-MJ05-E BR-MJ05  
BR-MJ10


**7**



**Fits:** BR-CT91 BR-CT90-E BR-CT90  
BR-CT50 BR-CT51 BR-CT20  
BR-CT21 BR-TY22 BR-TY23  
BR-TY20 BR-TY21 BR-MJ05-E  
BR-MJ05 BR-MJ10

**8**

M65T



SHIMANO M-SYSTEM COMPATIBLE

**Fits:** BR-M560 BR-M561 BR-MC32-E  
BR-MC32 BR-MC30-CH BR-MC30  
BR-MC31-CH BR-MC31 BR-MC12  
BR-MC12-E BR-MC10 BR-MC11  
BR-MC15 BR-M290 BR-M290-E  
BR-CT50 BR-CT51 BR-TY22  
BR-TY23

### ■ Brake shoe characteristics

	Cartridge shoe	M SYSTEM	Length	Threaded shoe post	Brake shoe characteristics
M70T3	—	○	70 mm	○	Performs especially well in wet conditions and may pass DIN standards. Gives off less noise, but the pad is heavier, faster rim wear and tends to fade.
M70T4	—	○	70 mm	○	Only for side wall machined rims. Performs especially well in wet conditions and may pass DIN standard. Tend to be low noise, low rim wear and fade.
M70W	—	○	70 mm	○	Performs well in dry conditions and tends to be low noise.
S70T	—	—	70 mm	○	Wears in muddy conditions.
S65T	—	—	60 mm	○	Performs especially well in wet conditions and may pass DIN standards. Gives off less noise, but the pad is heavier, faster rim wear and tends to fade.
M65T	—	○	60 mm	—	Performs especially well in wet conditions and may pass DIN standards.
M55T	—	○	55 mm	—	Faster rim wear and tends to fade.

	Code No.	Description
1	Y-8BM9803A	M70T4 Brake Shoe Set (Pair)
	Y-8BM9810A	M70T3 (BR-M600) Brake Shoe Set (Pair)
2	Y-8GV9801A	S70T (BR-M570) Brake Shoe Set (Pair)
3	Y-8B39801A	M70W (BR-C900) Brake Shoe Set (Pair)
4	Y-8CF98100	M70T2 Brake Shoe Set (10 pairs)
5	Y-8GP9810A	S65T (BR-M330) Brake Shoe Set (10 pairs)
6	Y-81X98100	M55T Brake Shoe Set (10 pairs)
7	Y-8GK98100	BR-CT91 Brake Shoe Set (10 pairs)
8	Y-84F98100	M65T Brake Shoe Set (5 pairs)

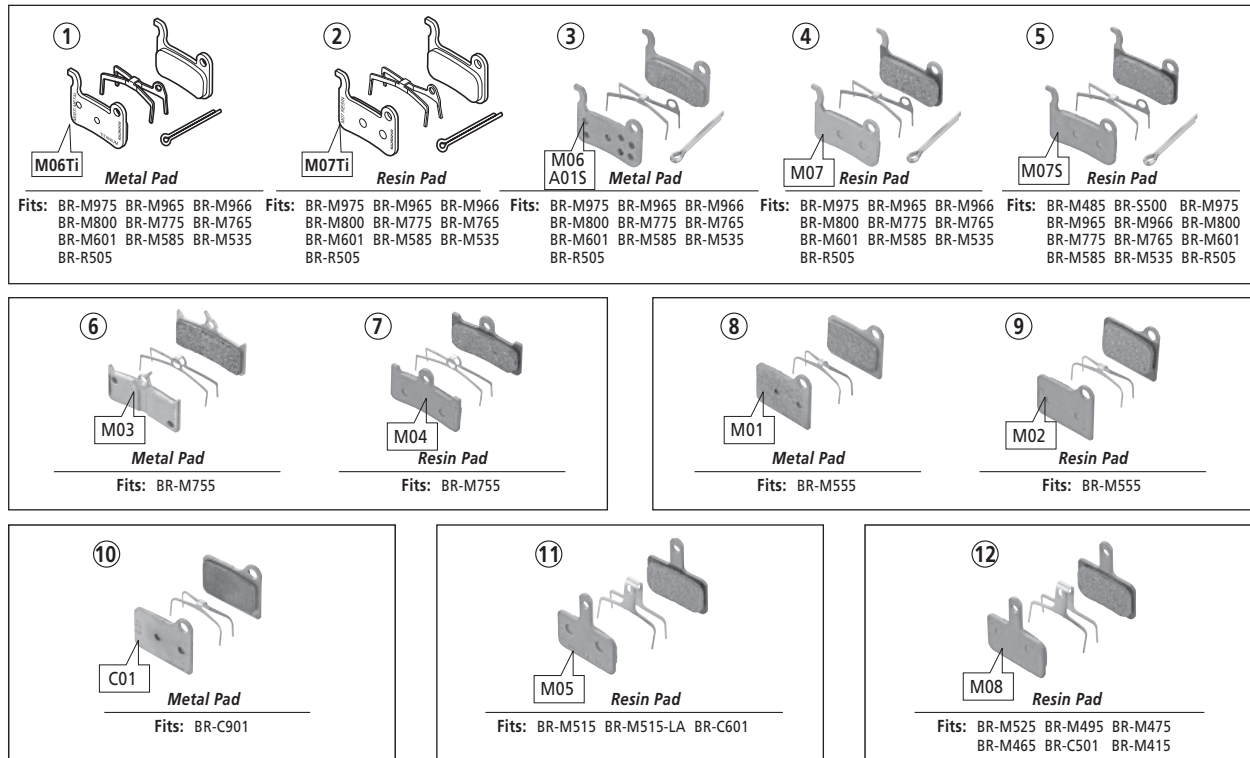
### ■ New Semi-Bulk Brake Shoe Package

Code No.	Description
Y-8IG 98080	A250 Brake Shoe Set (50 pairs)
Y-8GP 9803A	M330 Shoe 50 Set/Nut
Y-8IX 98080	BR-M55T Shoe Set (50 pairs)
Y-8BC 98110	A410 M50/T Shoe (50 pairs)
Y-8BM98110	M600 BrakeShoe Set (50 pairs)



Y-8IG 98080

Brake Pads for Disc Brake



- M01/M03/M06: Longer pad-life, good for anti-fade, good consistency either dry/wet. May cause noise while braking.
- M02/M04/M05/M07/M07S: Make less noise, but have less braking power, anti-fade performance and durability than metal pads.
- M06Ti: Longer pad-life, good for anti-fade, good constancy either dry/wet. May cause noise while braking titanium plate, light weight.
- M07Ti: Longer pad-life on long descend titanium plate, light weight.
- A01S/B01S: Same performance of metal pad. Longer pad-life on long descends.
- Do not use M08 brake pads in combination with the BR-M515/BR-M515-LA and BR-C601 brake system. If M08 brake pads are used, the brake arm and caliper will touch before the pad wear indicator is noticed and a noise indicating that the pads need to be replaced is heard, and this will result in a gradual reduction in braking performance until ultimately the brakes stop working.
- C01: Easy, controllable metal pad, good for trekking use.

■ Disc Brake Pads Set

	Code No.	Description
1	<b>Y-8E5 98010</b>	BR-M975 Metal Pad (M06Ti) & Spring w/Split Pin
2	<b>Y-8E5 98020</b>	BR-M975 Resin Pad (M07Ti) & Spring w/Split Pin
3	<b>Y-8CL 98010</b>	BR-M965 Metal Pad (M06) & Spring w/Split Pin
	<b>Y-8EP 98010</b>	BR-M775 Resin Pad (A01S) & Spring
4	<b>Y-8CL 98020</b>	BR-M965 Resin Pad (M07) & Spring w/Split Pin
5	<b>Y-8CY 98010</b>	BR-M765 Resin Pad (M07S) & Spring w/Split Pin
	<b>Y-8E5 98010</b>	BR-M485 Resin Pad (B01S) & Spring
6	<b>Y-8B2 98060</b>	BR-M755 Metal Pad (M03) & Spring
7	<b>Y-8B2 98090</b>	BR-M755 Resin Pad (M04) & Spring
8	<b>Y-8B5 98010</b>	BR-M555 Metal Pad (M01) & Spring
9	<b>Y-8B5 98040</b>	BR-M555 Resin Pad (M02) & Spring
10	<b>Y-8C2 98010</b>	BR-C901 Metal Pad (C01) & Spring
11	<b>Y-8B6 98010</b>	BR-M515 Resin Pad (Unmarked or M05) & Spring
12	<b>Y-8C9 98010</b>	BR-M475 Resin Pad (M08) & Spring

(See page 261)

Code No.	Description
<b>Y-8C9 98030</b>	M06 M07S M08 Pad Set

< Contents >

Code No.	Description	Quantity
<b>Y-8CL 98010</b>	Metal Pad (M06) & Spring	12 sets
<b>Y-8CY 98010</b>	Resin Pad (M07S) & Spring	4 sets
<b>Y-8C9 98010</b>	Resin Pad (M08) & Spring	4 sets



Y-8CL 98010



Y-8CY 98010



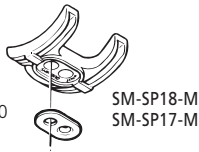
Y-8C9 98010

**SM-SP18-M**

Code No. Y-66Y 98600

**SM-SP18-T**

Code No. Y-66Y 98610

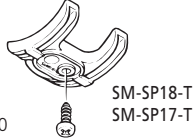


**Hi-Grade SM-SP17-M**

Code No. Y-66Y 98500

**Hi-Grade SM-SP17-T**

Code No. Y-66Y 98510



**WB Maintenance Oil**

1RCan  
Code No. Y-002 01000

Dipping Vessel  
Code No. Y-002 01100

1RCan & Dipping Vessel  
Code No. Y-002 98010



**Mineral Oil For Disc Brake**

Code No. Y-839 98010



**Internal Hub Grease**

100g Tube Type  
Code No.Y-041 20800

2.5kg Can  
Code No.Y-041 20900



**Roller Brake Grease**

100g Tube Type  
Code No. Y-041 20400



**DURA-ACE Grease**

100g Tube  
Code No.Y-041 10200

50g Can  
Code No.Y-041 10000

500g Can  
Code No.Y-041 10010



100g

50g

500g

**SIS-SP41 Grease**

Special grease for SIS-SP41  
outer casing  
50g Can  
Code No.Y-041 80000



**Freehub Body Special Grease**

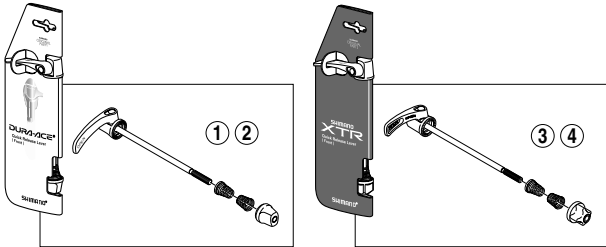
50g Can  
Code No.Y-3B9 80000



■ Brake Pad Line up (for Disc Brake)

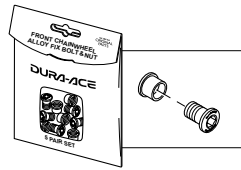
Model NO.	type	M01	M02	M03	M04	M05	M06Ti	M06	M07Ti	M07	M07-S	M08	C01
		Sintered Metal	Resin	Sintered Metal	Resin	Resin	Sintered Metal	Sintered Metal	Resin	Resin	Resin	Resin	Sintered Metal
BR-M975 / BR-M975P	Hydraulic						option		Standard				
BR-M800	Hydraulic							Standard			option		
BR-M765	Hydraulic							option			Standard		
BR-M601	Hydraulic							Standard			option		
BR-M585	Hydraulic							option			Standard		
BR-M535	Hydraulic							option			Standard		
BR-M525	Hydraulic											Standard	
BR-S500	Hydraulic										Standard		
BR-M545	Mechanical							Standard					
BR-M415	Mechanical											Standard	
BR-M495	Mechanical											Standard	
BR-M465	Mechanical											Standard	
BR-C901	Hydraulic												Standard
BR-R505	Mechanical							Standard					

**Complete Quick Release for Front Hub / Freehub**



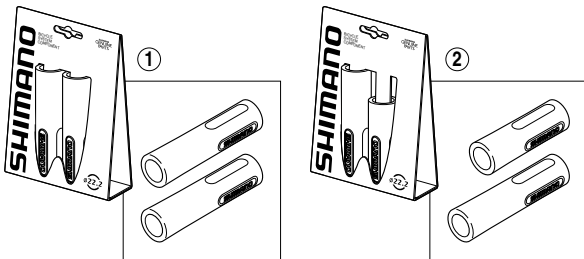
	Code No.	Description
1	Y-22Z 90100	Complete Quick Release (133 mm) for DURA-ACE Front Hub
2	Y-3A0 90100	Complete Quick Release (163 mm) for DURA-ACE Freehub
3	Y-23R 90100	Complete Quick Release (133 mm) for XTR Front Hub
4	Y-32T 90100	Complete Quick Release (163 mm) for XTR Freehub
5	Y-22E 90102	Complete Quick Release (129 mm) for Front Hub
6	Y-3AN 90131	Complete Quick Release (168 mm) for Freehub

**Gear Fixing Bolt & Nut (Aluminum) for Front Chainwheel**



Code No.	Description
Y-17X 98010	Gear Fixing Bolt (M8 x 9.8) & Nut (Silver/5 sets) for DURA-ACE
Y-17X 98040	Gear Fixing Bolt (M8 x 9.8) & Nut (Blue/5 sets) for DURA-ACE
Y-17X 98050	Gear Fixing Bolt (M8 x 9.8) & Nut (Red/5 sets) for DURA-ACE
Y-17X 98060	Gear Fixing Bolt (M8 x 9.8) & Nut (Black/5 sets) for DURA-ACE

**Grip (For Handle Bar Diameter 22.2 mm)**



	Code No.	Description
1	Y-8XE 98100	Long Grip (Black/Pair)
	Y-8XE 98110	Long Grip (Gray/Pair)
2	Y-8XE 98120	Half & Long Grip (Black)
	Y-8XE 98130	Half & Long Grip (Gray)

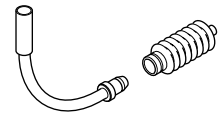
**Chain Pin**



Code No.	Description
Y-08X 98011	Super Narrow 10-speed HG chain for CN-7801/6600 (5pcs)
Y-08X 98021	Super Narrow 10-speed HG chain for CN-7801/6600 (50pcs)
Y-08D 98010	Super Narrow 10-speed HG chain for CN-7800 (5pcs)
Y-08D 98020	Super Narrow 10-speed HG chain for CN-7800 (50pcs)
Y-069 98010	Super Narrow 9-speed HG chain (5pcs)
Y-069 98020	Super Narrow 9-speed HG chain (50pcs)
Y-045 98010	HG IG chain (3pcs)
Y-045 98020	HG IG chain (50pcs)

10-speed for CN-7801/6600		with two lines
10-speed for CN-7800		with line
9-speed		Silver color
8-speed		Black color

**V-BRAKE 90° Inner Cable Lead & Boots Unit**



Code No.  
Y-8AA 98140

**Center Lock adapter for 6-bolt rotor**



29g/wheel

**Rim Tape**

High-pressure rim tape for 700C/ 650C rims except tubeless compatible type rims

